

\***Design**-Neway cast steel globe valve have been designed to meet the requirement of British Standard BS 1873 and conform to American National Standard ANSI B 16.34  
Wall thickness dimensions comply with API 600  
Face to face and end to end dimension conform to BS2080,ANSI B16.10 and ISO 5752  
End flange dimension conform to ANSI B 16.5  
BW end dimension conform to ANSI B 16.25



\***Yoke Nut**-Extra long thread engagement between yoke nut and stem provide long thread life.Stem nut arrangement is designed to permit removal of hand wheel without allowing stem and disc to drop into closed position if hand wheel is removed with the valve open.

\***Gland Eyebolts** facilitate packing maintenance. For ease in re-packing the valve,gland eyebolts are mounted to swing aside.

\***Stem and Packing Chamber Wall**-Close roundness,straightness and superior surface finishes of 32RMS or better ofr the stem and 63RMS for the packing chamber ensure the valve meet low fugitive emission test.

\***Adequate Clearances** prevent stem scoring.Two piece gland with sufficient clearance between the gland,stem, and stuffing box,prevents scoring stem even if the gland is inserted unevenly.

\***Stuffing Boxes**-Packing sizes conform to API requirements for refinery service In all cases,when valve is back seated, the pressure on the packing is relieved,allowing valve to be repacked under pressure.Packing is of the latest sandwich style.

\***Body-To-Bonnet Joint**-A male and female joint is used in 150-lb,300-lb and 600-lb Valve.Ring joint is used in the body-bonnet connection in 900-lb and higher rated valves.

\***Adequate Clearance For Bolting**-Bodies of all valves give adequate clearance between the body neck and back face of flange for bolts and nuts. On all globe valves,body-bonnet flanges are made circular for greater strength and for minimum distortion.

\***Seat Rings** are provided with thread in.Extra smooth seating surface is provided to assure tight seating.

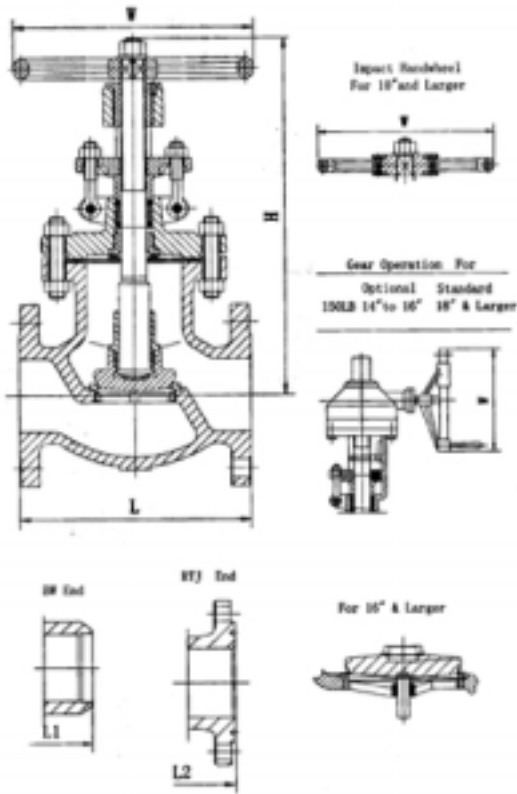
\***Lantern Ring** will be provided on request only for class 300 and up.

\***Disc**- Plug type disc are provided for NEWAY globe valves.

\***Handwheel**-Globe valve require higher closing torque than gate valve with the same seat diameter and pressure rating.The impact hand wheel can provide more closing force than normal handwheel,therefore impact hand wheel are supplied at manufacturer's option unless specified by customer.

**Class 150**

Figure No. GL1RA8 GL1JA8 G11BA8



Standard materials of parts

Parts	Materials
body	ASTM A216-WCB
Bonnet	ASTM A216-WCB
Stem	ASTM A182-F6a
Disc	ASTM A105+/Cr13 Overlay ASTM A182-F6a(6" & smaller)
Yoke sleeve	ASTM A439 D-2
Gland flange	ASTM A216-WCB
Handwheel	Ductile iron
Impact block	Carbon steel
Retain plate	Carbon steel
Seat ring	ASTM A 105+STL.Overlay
Disc nut	ASTM A 276-420
Back seat	ASTM A 276-420
Gland	ASTM A 276-420
Gasket	Spiral wound graphite
Packing	Graphite
Yoke	ASTM A216-WCB
Bonnet stud/nut	ASTM A193-B7/ASTM A 194-2H
Gland bolt/nut	ASTM A193-B7/ASTM A 194-2H
Spacer ring	ASTM A 276-420
Stem washer	ASTM A 276-420
Grease fitting	Steel

Dimensions(in./mm)

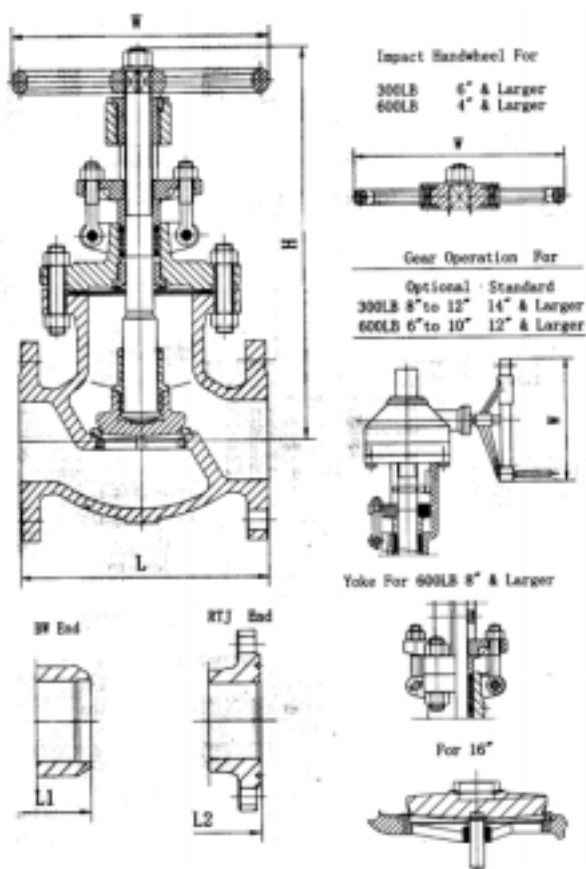
150#	NPS	In	2	2-1/2	3	4	5	6	8	10	12	14	16	18
	DN	mm	50	65	80	100	125	150	200	250	300	350	400	450
	L-L1	In	8	8.5	9.5	11.5	14	16	19.5	24.5	27.5	31	36	38.5
	(RF-BW)	mm	203	216	241	292	356	406	495	622	699	787	914	978
	L2	In	8.5	9.0	10.0	12.0	14.5	16.5	20.0	25.0	28.0	31.5	36.5	39
	RTJ	mm	216	229	254	305	368	419	508	635	711	800	927	991
	W	In	8	10	10	12	14	14	16	20	20	22	26	24
		mm	200	250	250	300	350	350	400	500	500	560	650	610
	H	In	13.3	14.7	15.6	18.7	19.6	20.6	23.1	29.1	33.9	37.4	39.2	44.9
	OPEN	mm	338	373	396	476	497	524	588	738	862	950	994	1140
	WT	RF	21	28	35	58	82	100	160	253	398	550	724	1400
	(KG)	BW	17	20	27	47	71	86	138	219	362	491	650	1250

Class300/600

**Figure No. GL3RA8 GL6RA8 GL3JA8 GL6JA8 GL3BA8  
GL6BA8**

**Standard materials of parts**

Parts	Materials
body	ASTM A216-WCB
Bonnet	ASTM A216-WCB
Stem	ASTM A182-F6a
Disc	ASTM A105+/Cr13 Overlay ASTM A182-F6a(6" & smaller)
Yoke sleeve	ASTM A439 D-2
Gland flange	ASTM A216-WCB
Handwheel	Ductile iron
Impact block	Carbon steel
Retain plant	Carbon steel
Seat ring	ASTM A 105+STL.Overlay
Disc nut	ASTM A 276-420
Back seat	ASTM A 276-420
Gland	ASTM A 276-420
Gasket	Spiral wound graphite
Packing	Graphite
Yoke	ASTM A216-WCB
Bonnet stud/nut	ASTM A193-B7/ASTM A 194-2H
Gland bolt/nut	ASTM A193-B7/ASTM A 194-2H
Spacer ring	ASTM A 276-420
Stem washer	ASTM A 276-420
Grease fitting	Steel



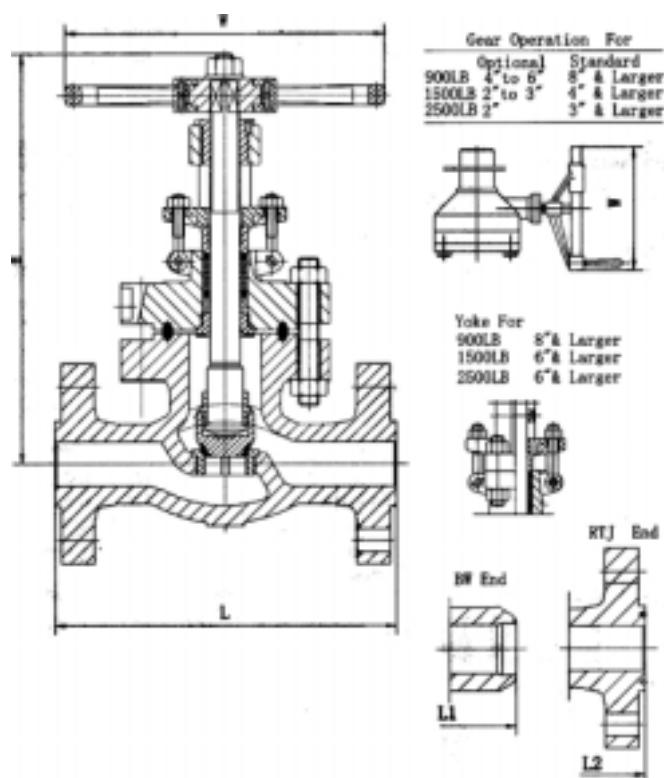
**Dimensions(in./mm)**

300#	NPS	In	2	2 1/2	3	4	5	6	8	10	12	14	16
	DN	mm	50	65	80	100	125	150	200	250	300	350	400
	L-L1	In	10.5	11.5	12.5	14	15.75	17.5	22	24.5	28	33	34
	(RF-BW)	mm	267	292	318	356	400	445	559	622	711	838	864
	L2	In	11.12	12.12	13.12	14.62	16.37	18.12	22.62	25.12	28.62	33.62	34.62
	RTJ	mm	283	308	333	371	416	460	575	638	727	854	879
	W	In	8	10	10	14	18	50	22	24	26	24	24
	mm	200	250	250	350	450	500	560	600	650	610	610	
	H	In	13.9	15.3	16.6	19.5	227	26.6	35.9	37.4	40.6	44.5	51.6
	OPEN	mm	353.5	388.5	420.5	495.5	576.5	674.5	911.5	949	1032	1130	1310
	WT	RF	25	38	49	76	125	168	282	385	724	1125	1650
	(KG)	BW	19	29	38	58	104	137	237	319	632	975	1450
600#	L-L1	In	11.5	13	14	17	20	22	26	31	33	35	39
	(RF-BW)	mm	292	330	356	432	508	559	660	787	838	889	991
	L2	In	11.62	13.12	14.12	17.12	20.12	22.12	26.12	31.12	33.12	35.12	39.12
	RTJ	mm	295	333	359	435	511	562	663	790	841	892	994
	W	In	10	10	14	18	20	22	24	28	24	24	30
	mm	250	250	350	450	500	560	600	700	610	610	610	762

	H	In	15.6	17.6	19.5	23.6	27.6	31.1	39.9	46.5	55	57.1	63.4
	OPEN	mm	396.5	446	495.5	599	700	791	1014	1180	1397	1450	1610
	WT	RF	36	50	78	120	187	284	543	700	900	1620	2160
	(KG)	BW	29	40	64	91	142	227	460	562	739	1330	1750

**Class 900/1500/2500**

**Figure No. GL9RA5 GL15RA5 GL25RA5 GL9JA5  
GL15JA5 GL25JA5 GL9BA5 GL15BA5 GL15BA5  
GL25BA5**



**Standard materials of parts**

Parts	Materials
body	ASTM A216-WCB
Bonnet	ASTM A216-WCB
Stem	ASTM A182-F6a,ENP
Disc	ASTM A105+STL Overlay
Yoke sleeve	ASTM A439 D-2
Gland flange	ASTM A216-WCB
Handwheel	Ductile iron
Impact block	Carbon steel
Retain plant	Carbon steel
Seat ring	ASTM A 105+STL.Overlay
Disc nut	ASTM A 276-420
Back seat	ASTM A 276-420
Gland	ASTM A 276-420
Gasket	Soft iron
Packing	Graphite
Yoke	ASTM A216-WCB
Bonnet stud/nut	ASTM A193-B7/ASTM A 194-2H
Gland bolt/nut	ASTM A193-B7/ASTM A 194-2H
Spacer ring	ASTM A 276-420
Stem washer	ASTM A 276-420
Grease fitting	Steel

**Dimensions(in./mm)**

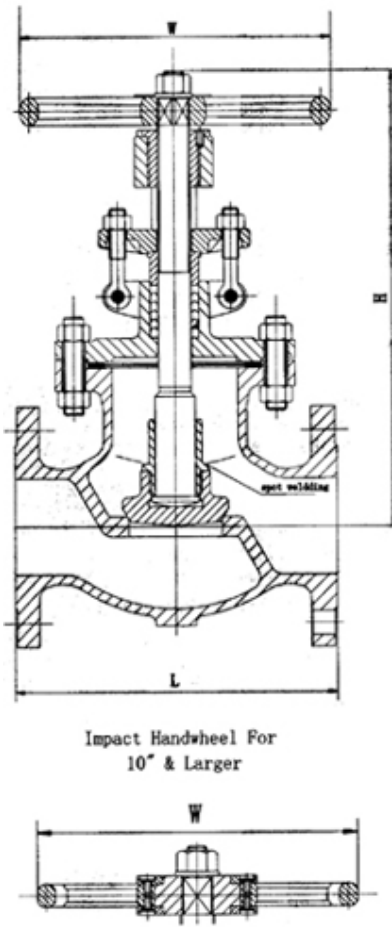
900#	NPS	In	2	2 1/2	3	4	6	8
	DN	mm	50	65	80	100	150	200
	L-L1	In	14.5	16.5	15	18	24	29
	(RF-BW)	mm	368	419	381	457	610	737
	L2	In	14.62	16.62	15.12	18.12	24.12	29.12
	(RTJ)	mm	371	422	384	460	613	740
	W	In	14	14	18	20	24	24
		mm	350	350	450	500	610	610

	H OPEN	In mm	23.2 590	26 660	27.5 699	31.3 795	43.6 1108	46.6 1184
	WT (KG)	RF BW	95 75	138 112	108 85	195 158	435 360	720 597
1500#	L-L1 (RF-BW)	In mm	14.5 368	16.5 419	18.5 470	21.5 546	27.75 705	32.75 832
	L2 (RTJ)	In mm	14.62 371	16.62 422	18.62 473	21.62 549	28.00 711	33.13 842
	W	In mm	14 350	14 350	20 500	22 560	24 610	24 610
	H OPEN	In mm	21.7 550	22.5 572	22.9 582	31.3 795	50.3 1278	77.2 1960
	WT (KG)	RF BW	95 75	138 112	215 179	350 299	560 462	990 830
2500#	L-L1 (RF-BW)	In mm	17.75 451	20 508	22.75 578	26.5 673	36 914	40.25 1022
	L2 (RTJ)	In mm	17.88 454	20.25 514	23.00 584	26.88 683	36.50 927	40.88 1038
	W	In mm	16 400	20 500	22 560	24 610	24 610	24 610
	H OPEN	In mm	28.3 720	31.5 800	34.8 885	49.6 1260	75 1905	97 2465
	WT (KG)	RF BW	176 141	264 214	308 238	759 644	1990 1700	4390 3950

Basic Design:API603

Wall Thickness:ANSI B16.34

Figure No. GL1RG10



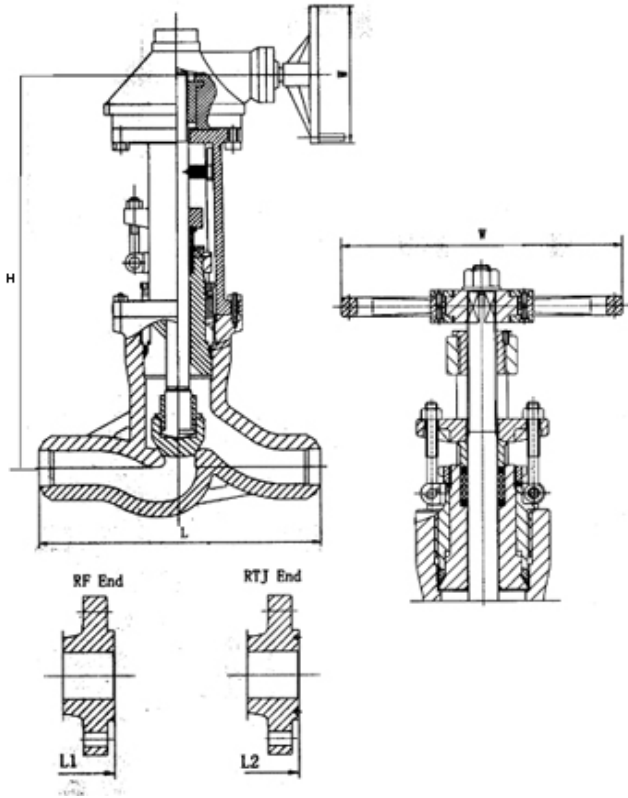
Standard materials of parts

Parts	Materials
body	ASTM A315-CF8M
Bonnet	ASTM A315-CF8M
Stem	ASTM A182-F316
Disc	ASTM A315-CF8M
Yoke sleeve	ASTM A439 D-2
Gland flange	ASTM A315-CF8
Handwheel	Ductile iron
Disc nut	ASTM A182-F316
Gland	ASTM A276-316
Gasket	Spiral wound graphite
Packing	Graphite
Bonnet stud/nut	ASTM A 193-B8/ASTM A194-8
Gland bolt/nut	ASTM A 193-B8/ASTM A194-8
Spacer ring	ASTM A182-F316
Stem washer	ASTM A 276-304
Grease fitting	Caron Steel Ni Plated
Retain nut	ASTM A276-304

Dimensions(in./mm)

NPS	In	1/2	3/4	1	1 1/2	2	2 1/2	3	4	6	8	10	12
DN	mm	15	20	25	40	50	65	80	100	150	200	250	300
L	In	4.25	4.62	5	6.5	8	8.5	9.5	11.5	16	19.5	24.5	27.5
	mm	108	118	127	165	203	216	241	292	406	495	622	699
W	In	4	4	4	5.5	8	10	10	12	14	16	20	20
	mm	100	100	100	140	200	250	250	300	350	400	500	500
H	In	7.3	7.50	8.30	9.20	13.3	14.7	15.6	18.7	20.6	23.1	29.1	33.9
	mm	186	191	212	234	338	373	396	476	524	588	738	862
WT	Kg	3	3.3	4.3	11	15	21	31	44	78	126	195	294

Figure No.GL9BA5-PS GL15BA50-PS GL25BA5-PS  
 GL9RA5-PS GL15RA5-PS GL25RA5-PS GL9JA5-PS  
 GL15JA5-PS GL25JA5-PS



Standard materials of parts

Parts	Materials
Body	ASTM A216-WCB
Bonnet	ASTM A105+STL.Overlay
Stem	ASTM A182-F6a
Disc	ASTM A216-WCB+STL.Overlay
Yoke sleeve	ASTM A439 D-2
Gland flange	ASTM A216-WCB
Handwheel	Ductile Iron
Impact block	Ductile Iron
Retain plate	Carbon steel
Seat ring	ASTM A105+STL.Overlay
Disc nut	ASTM A276-420
Spacer ring	ASTM A276-420
Gland	ASTM A276-420
Packing	Graphite
Yoke	ASTM A216-WCB
Bonnet stud/nut	ASTM A193-B7/A194-2H
Stem washer	ASTM A276-420
Gland bolt/nut	ASTM A193-B7/ASTM A194-2H
Gasket	ASTM A182-F304

Dimensions(in./mm)

900#	NPS	Ln	2	2-1/2	3	4	6	8
	DN	mm	50	65	80	100	150	200
	L-L1 (BW-RF)	In mm	14.5 368	16.5 419	15 381	18 457	24 610	29 737
	L2 (RTJ)	In mm	14.62 371	16.62 422	15.12 384	18.12 460	24.12 613	29.12 740
	W	In mm	14 350	14 350	18 450	20 500	24 610	24 610
	H OPEN	In mm	24.4 619	25.2 641	28.4 721	33.5 850	48.2 1225	53.1 1350
1500#	L-L1 (BW-RF)	In mm	14.5 368	16.5 419	18.5 470	21.5 546	27.75 705	32.75 832
	L2 (RTJ)	In mm	14.62 371	16.62 422	18.62 473	21.62 549	28.00 711	33.13 842

	W	In mm	14 350	14 350	20 500	22 560	24 610	24 610
	H OPEN	In mm	24.4 619	25.2 641	32.9 835	33.7 857	48.4 1230	70.9 1800
	WT (KG)	RF BW	84 58	116 84	143 100	236 168	918 781	1764 1502
2500#	L-L1 (BW-RF)	In mm	17.75 451	20 508	22.75 578	26.5 673	36 914	40.25 1022
	L2 (RTJ)	In mm	17.88 454	20.25 541	23.00 584	26.88 683	36.50 927	40.88 1038
	W	In mm	16 400	20 500	22 560	24 610	24 610	24 610
	H OPEN	In mm	24.3 616	30.7 781	31.5 800	51.2 1300	53.9 1370	85 2160
	WT (KG)	RF BW	105 74	163 116	221 147	525 368	1313 973	2520 2100